

# GIBSON PLAZA

NEC E. Gibson Road & Pioneer Avenue - Woodland, CA

A PROUD MEMBER OF  
**CHAIN LINKS**  
RETAIL ADVISORS



Kevin Soares  
Executive Vice President  
CA DRE #01291491  
ksoares@GallellIRE.com

Jeff Hagan  
Senior Vice President  
CA DRE #01494218  
jhagan@GallellIRE.com

Gallelli Real Estate  
3005 Douglas Blvd., Suite 200  
Roseville, CA 95661  
P 916 772 1700  
www.GallellIRE.com  
Gary B. Gallelli, Broker  
CA DRE #00811881



# GIBSON PLAZA

## PROPERTY HIGHLIGHTS & DEMOGRAPHICS

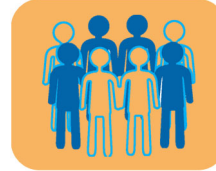
A PROUD MEMBER OF  
**CHAINLINKS**  
RETAIL ADVISORS

**location:** NEC E. Gibson Road and Pioneer Avenue  
Woodland, CA

**anchor tenants:** Bel Air Market

**shopping center GLA:** ±88,200 Square Feet (GLA)

**availability:** ±900 & ±1,500 SF Inline Retail Space



### 2021 total population

1-mile	21,942
3-mile	53,567
5-mile	63,919



### 2021 daytime population

1-mile	16,058
3-mile	58,194
5-mile	67,836



### 2021 total employees

1-mile	4,033
3-mile	28,558
5-mile	32,494



### 2021 total households

1-mile	6,497
3-mile	17,315
5-mile	20,880



### 2021 average HH income

1-mile	\$120,547
3-mile	\$101,626
5-mile	\$99,816

### traffic counts

E. Gibson Rd (west of Pioneer Ave)	24,777
E. Gibson Rd (east of Pioneer Ave)	15,547
Pioneer Ave (north of E. Gibson Rd)	9,939
Pioneer Ave (south of E. Gibson Rd)	7,623



# BEL AIR



Kevin Soares  
Executive Vice President  
CA DRE #01291491  
ksoares@GallellIRE.com

Jeff Hagan  
Senior Vice President  
CA DRE #01494218  
jhagan@GallellIRE.com

Gallelli Real Estate  
3005 Douglas Blvd., Suite 200  
Roseville, CA 95661  
P 916 772 1700  
www.GallellIRE.com  
Gary B. Gallelli, Broker  
CA DRE #00811881



# GIBSON PLAZA

## PROPERTY OVERVIEW

A PROUD MEMBER OF  
**CHAINLINKS**  
RETAIL ADVISORS

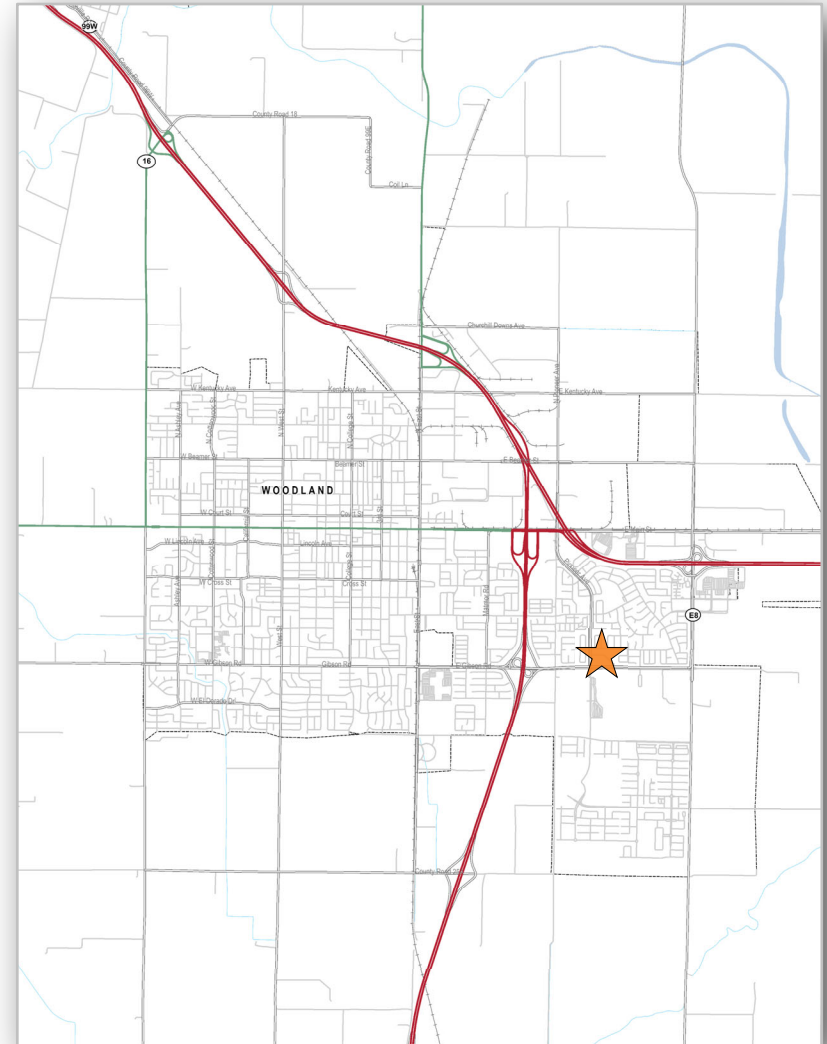
**Gibson Plaza** is located at the northeast corner of Gibson Road and Pioneer Avenue in Woodland, CA. This ±88,200 square foot neighborhood shopping center is anchored by Bel Air and is ideally situated in the Woodland trade area.

The center benefits from strong demographics in the southern portion of the city and is located across the street from Pioneer High School and the Woodland Community College.

The City of Woodland is the County Seat of Yolo County and is located 15 miles northwest of Sacramento along the Interstate 5 corridor. The city has benefited from strong residential growth over the past 10 years while retaining its “small town” appeal that draws so many to the city.

In addition to its strong retail market, the economy of Woodland and the immediate surrounding area has a strong foundation based on agriculture. The region also boasts an impressive industrial sector as numerous manufacturing and warehouse centers have located to Woodland.

Notable companies that have regional distribution in Woodland include See's Candies, Rite Aid, Target, Excel and Capitol Beverage Company.



**Kevin Soares**  
Executive Vice President  
CA DRE #01291491  
ksoares@GallellIRE.com

**Jeff Hagan**  
Senior Vice President  
CA DRE #01494218  
jhagan@GallellIRE.com

**Gallelli Real Estate**  
3005 Douglas Blvd., Suite 200  
Roseville, CA 95661  
P 916 772 1700  
www.GallellIRE.com  
Gary B. Gallelli, Broker  
CA DRE #00811881



**GALLELLI**  
REAL ESTATE

# GIBSON PLAZA

NEC E. Gibson Road & Pioneer Avenue - Woodland, CA

A proud member of  
**CHAINLINKS**  
RETAIL ADVISORS

## SITE PLAN



SUITE	TENANT	SQ. FT.
1801-A	Kuji Asian Grill	1,200
1801-B	Mr. Pickle's Sandwich Shop	900
1801-C	ProFile Nail Salon	1,200
1801-D	The Golden1 Credit Union	4,200
1813	Aisle 1 Fuel Station	3,500
1849-A	<b>AVAILABLE</b>	1,500
1849-B	Goodwill Donation Express	1,200
1849-C	<b>AVAILABLE</b>	900
1849-D	Falafel Corner	1,000
1849-E	Iguanas Mexican Grill	1,400
1861-A	Little Caesars Pizza	1,500
1861-B	Big Kahuna Frozen Yogurt	1,200
1861-C	Wave Broadband	900
1861-D	ProCuts Salon	1,200
1861-E	Fresh Cleaners	1,800
1885	Bel Air	58,560
1897-A	Kumon Math & Reading Center	975
1897-B	Great Clips	1,007
1897-C	H2O Purified Water	1,007
1897-D	J Relaxing Massage Center	1,025
1897-E	Jamba Juice	1,575

For leasing information, please contact:

**Kevin Soares**  
CA DRE #01291491  
ksoares@GallelliRE.com

**Jeff Hagan**  
CA DRE #01494218  
jhagan@GallelliRE.com

**Gallelli Real Estate**  
3005 Douglas Blvd., Suite 200  
Roseville, CA 95661  
P 916 772 1700  
www.GallelliRE.com  
Gary B. Gallelli, Broker  
CA DRE #00811881



# GIBSON PLAZA

## INTERSECTION AERIAL

A PROUD MEMBER OF  
**CHAIN LINKS**  
RETAIL ADVISORS



**Kevin Soares**  
Executive Vice President  
CA DRE #01291491  
ksoares@GallellIRE.com

**Jeff Hagan**  
Senior Vice President  
CA DRE #01494218  
jhagan@GallellIRE.com

**Gallelli Real Estate**  
3005 Douglas Blvd., Suite 200  
Roseville, CA 95661  
P 916 772 1700  
www.GallellIRE.com  
Gary B. Gallelli, Broker  
CA DRE #00811881



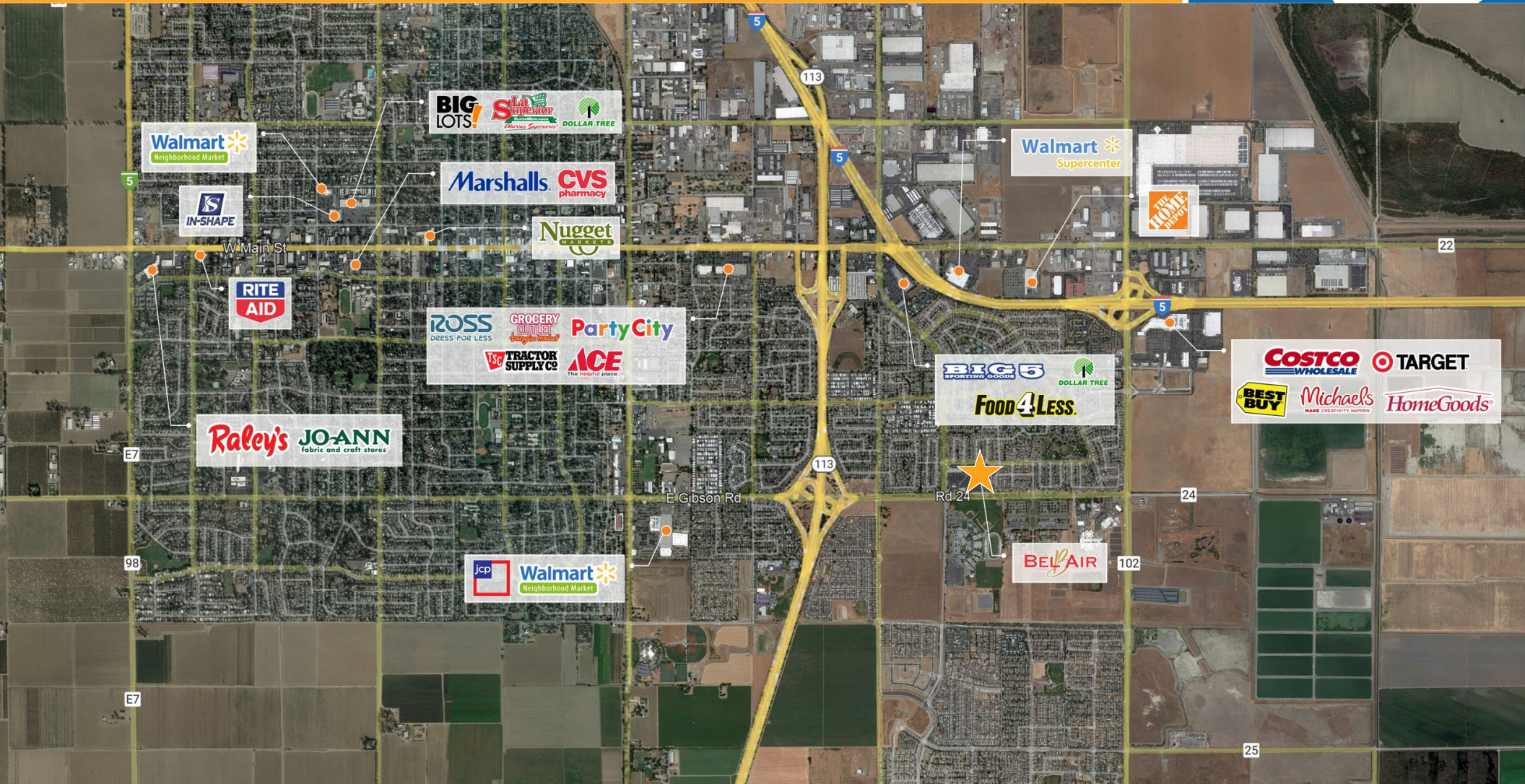
Licensed as Real Estate Salespersons by the CA DRE. The information contained herein has been obtained from sources we deem reliable. While we have no reason to doubt its accuracy, we do not guarantee it.  
© Gallelli Real Estate. All Rights Reserved.



# GIBSON PLAZA

## RETAIL TRADE AREA AERIAL

A PROUD MEMBER OF  
**CHAIN LINKS**  
RETAIL ADVISORS



**Kevin Soares**  
Executive Vice President  
CA DRE #01291491  
ksoares@GallellIRE.com

**Jeff Hagan**  
Senior Vice President  
CA DRE #01494218  
jhagan@GallellIRE.com

**Gallelli Real Estate**  
3005 Douglas Blvd., Suite 200  
Roseville, CA 95661  
P 916 772 1700  
www.GallellIRE.com  
Gary B. Gallelli, Broker  
CA DRE #00811881



Licensed as Real Estate Salespersons by the CA DRE. The information contained herein has been obtained from sources we deem reliable. While we have no reason to doubt its accuracy, we do not guarantee it.  
© Gallelli Real Estate. All Rights Reserved.

