



**Robb Osborne**  
Partner  
DRE #01398696  
(916) 789-3337  
rosborne@gallire.com

**Brandon Sessions**  
Senior Vice President  
DRE #01914432  
(916) 789-3339  
bsessions@gallire.com

# PROPERTY HIGHLIGHTS

- Office condominium unit ideal for owner-users
- 5712 - Open Office Space with 11'9" drop ceilings
- Parking at 5 spaces per 1,000 square feet of building area – can be for either medical and office use!
- The building was built in 2007 and enjoys excellent access to many shopping, retail and restaurant centers
- Excellent location along Lonetree Blvd near Sunset Blvd intersection, resulting in high daily traffic counts

## OFFICE UNIT AVAILABLE FOR PURCHASE

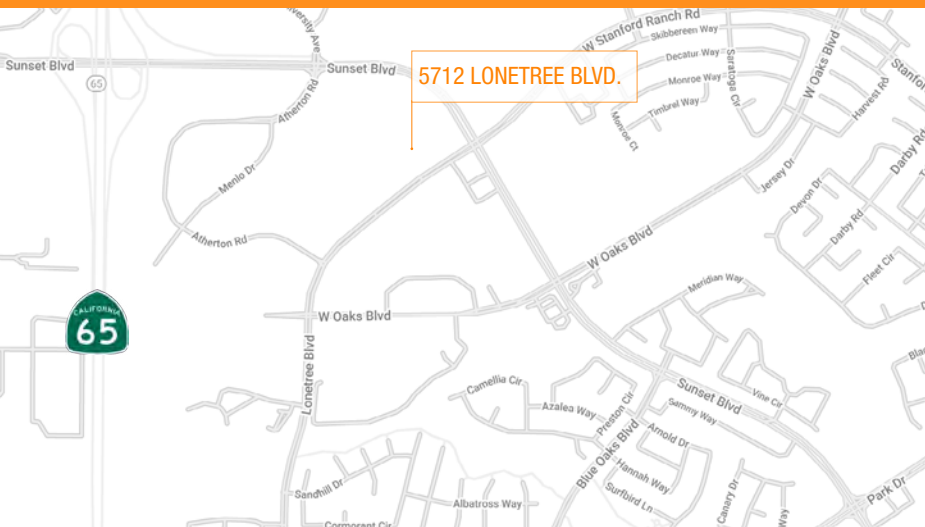
5712 LONETREE BLVD.

±1,348 SF

\$399,000

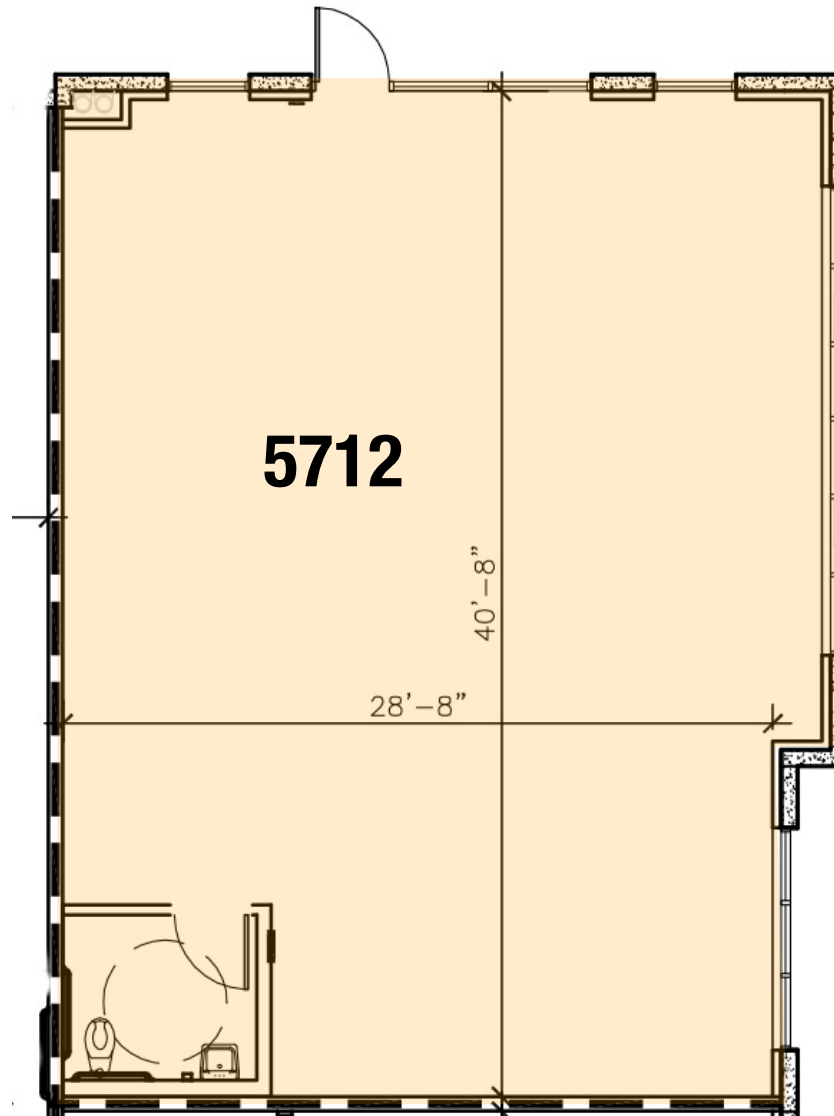
APN: 017-283-024-000

ASSOC. DUES: \$300/MONTH



# FLOOR PLAN

5712 AVAILABLE



Floor Plan Not To Scale

# PROPERTY PHOTOS



Click Here To View  
All Photos



# PROPERTY AERIAL



# PROPERTY AERIAL



5712 LONETREE BLVD.

# DEMOGRAPHICS

## MARKET OVERVIEW 3 MILE RADIUS



### KEY FACTS

**82,464**

Population

**37**

Median Age



Average Household Size

**\$111,372**

Median Household Income

### HOUSING STATS



**\$463,421**

Median Home Value



**27,061**

Households



**28.95%**

% Renter Occupied Housing Units

### COMMUTERS



**1.19%**

Used Public Transportation



**80.45%**

Drove Alone to Work

### EDUCATION

**1.66%**

No High School Diploma



**14.58%**

High School Graduate

**16.91%**

Some College

**31.98%**

Bachelor's Degree Plus

### BUSINESS



**43,277**

Total Employees

### EMPLOYMENT



**73.55%**

White Collar



**26.4%**

Blue Collar