

7041 EL CAMINO REAL

NEQ Highway 41 & El Camino Real - Atascadero, CA

A PROUD MEMBER OF
CHAINLINKS
RETAIL ADVISORS



Phillip Kyle
Senior Vice President
CA DRE #01229165
pkyle@GallelliRE.com

Gallelli Real Estate
P 805 892 6237
www.GallelliRE.com
Gary B. Gallelli, Broker
CA DRE #00811881



Licensed as Real Estate Salespersons by the CA DRE. The information contained herein has been obtained from sources we deem reliable. While we have no reason to doubt its accuracy, we do not guarantee it. © Gallelli Real Estate. All Rights Reserved.



7041 EL CAMINO REAL

PROPERTY HIGHLIGHTS & DEMOGRAPHICS

A PROUD MEMBER OF
CHAINLINKS
RETAIL ADVISORS

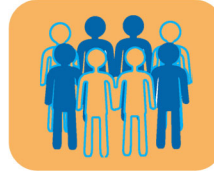
location: 7041 El Camino Real
Atascadero, CA

notable tenants in center: Vons, Rite Aid, 99¢ Only Stores, Starbucks, Panda Express, Carl's Jr.

building GLA: ±19,703 Square Feet (GLA)

availability: 100% Leased

asking rent & NNN charges: \$3.00 psf
\$0.50 psf NNN



2022 total population

1-mile	8,919
3-mile	27,361
5-mile	34,571



2022 daytime population

1-mile	10,184
3-mile	26,455
5-mile	32,640



2022 total employees

1-mile	5,549
3-mile	12,050
5-mile	13,759



2022 total households

1-mile	3,323
3-mile	10,522
5-mile	13,367



2022 average HH income

1-mile	\$118,197
3-mile	\$116,318
5-mile	\$121,809



traffic counts

US Hwy 101 (Morrow Rd)	±61,000 AADT
El Camino Real (at Hwy 41)	±53,000 AADT



Phillip Kyle
Senior Vice President
CA DRE #01229165
pkyle@GallelliRE.com

Gallelli Real Estate
P 805 892 6237
www.GallelliRE.com
Gary B. Gallelli, Broker
CA DRE #00811881

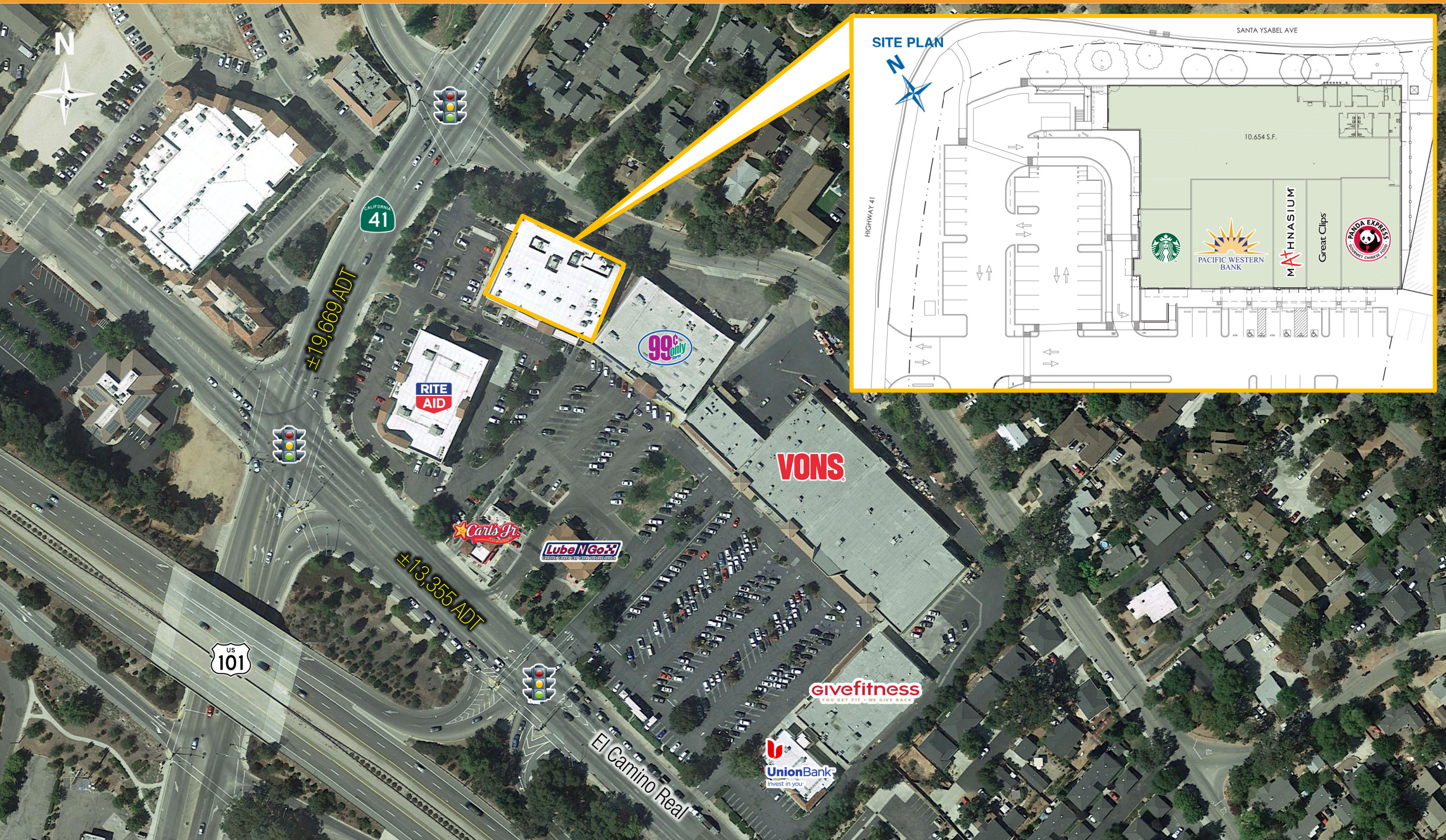


GALLELLI
REAL ESTATE

7041 EL CAMINO REAL

NEC El Camino Real & Morro Road - Atascadero, CA

A proud member of
CHAINLINKS
RETAIL ADVISORS



For leasing information,
please contact:

Phillip Kyle
Senior Vice President
CA DRE #01229165
pkyle@GallelliRE.com

Gallelli Real Estate
P 805 892 6237
www.GallelliRE.com
Gary B. Gallelli, Broker
CA DRE #00811881

7041 EL CAMINO REAL

PROPERTY OVERVIEW

A PROUD MEMBER OF
CHAINLINKS
RETAIL ADVISORS

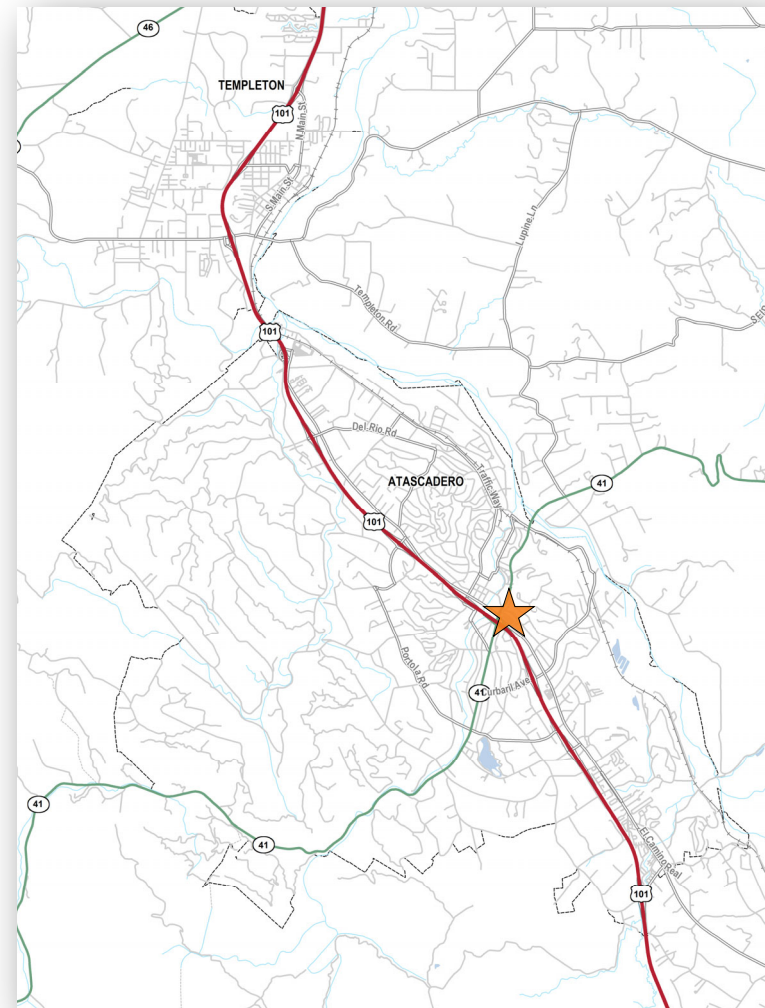
7041 El Camino Real is a ±19,703 square foot multi-tenant retail building located at the northeast corner of El Camino Real and CA Highway 41, along US Highway 101 in Atascadero, California.

Adjacent to a ±108,000 square foot grocery anchored neighborhood center, the subject building benefits from excellent visibility from Highway 41 and El Camino Real and is easily accessible from multiple ingress/egress access points.

Major retailers and traffic generators in close proximity include Vons, Rite Aid, 99¢ Only Stores, Galaxy Theaters, Smart & Final Extra and Food 4 Less.

The City of Atascadero is located along the Highway 101 corridor midway between Los Angeles and San Francisco. With a city population of more than 30,000 people, Atascadero is one of the largest cities in San Luis Obispo County.

Notable traffic generators in the region include California Polytechnic State University (21,000 students), Morro Bay State Park, and several marquee wineries such as Edna Valley Vineyards, J. Lohr Vineyards, Margarita Vineyards and Soaring Hawk Vineyards.



Phillip Kyle
Senior Vice President
CA DRE #01229165
pkyle@GallellIRE.com

Gallelli Real Estate
P 805 892 6237
www.GallellIRE.com
Gary B. Gallelli, Broker
CA DRE #00811881



GALLELLI
REAL ESTATE



7041 EL CAMINO REAL

RETAIL TRADE AREA AERIAL

A PROUD MEMBER OF
CHAINLINKS
RETAIL ADVISORS



Phillip Kyle
Senior Vice President
CA DRE #01229165
pkyle@GallellIRE.com

Gallelli Real Estate
P 805 892 6237
www.GallellIRE.com
Gary B. Gallelli, Broker
CA DRE #00811881



Licensed as Real Estate Salespersons by the CA DRE. The information contained herein has been obtained from sources we deem reliable. While we have no reason to doubt its accuracy, we do not guarantee it. © Gallelli Real Estate. All Rights Reserved.



GALLELLI
REAL ESTATE