

# RENAISSANCE CREEK

SWC Sierra College Boulevard & Douglas Boulevard - Roseville, CA

A PROUD MEMBER OF  
**CHAINLINKS**  
RETAIL ADVISORS



**BARINGS**

**Kevin Soares**  
Executive Vice President  
CA DRE #01291491  
ksoares@GallelliRE.com

**Jeff Hagan**  
Senior Vice President  
CA DRE #01494218  
jhagan@GallelliRE.com

**Gallelli Real Estate**  
3005 Douglas Blvd., Suite 200  
Roseville, CA 95661  
P 916 772 1700  
www.GallelliRE.com  
Gary B. Gallelli, Broker  
CA DRE #00811881



Licensed as Real Estate Salespersons by the CA DRE The information contained herein has been obtained from sources we deem reliable. While we have no reason to doubt its accuracy, we do not guarantee it.  
© Gallelli Real Estate. All Rights Reserved.



# RENAISSANCE CREEK

## PROPERTY HIGHLIGHTS & DEMOGRAPHICS

A PROUD MEMBER OF  
**CHAINLINKS**  
RETAIL ADVISORS

**location:** SWC Sierra College Boulevard and Douglas Boulevard  
Roseville, CA

**anchor tenants:** Safeway, HomeGoods

**shopping center GLA:** ±179,425 Square Feet (GLA)

**availability:** ±997 & ±1,100 SF Shop Space



### 2022 total population

1-mile	10,207
3-mile	74,336
5-mile	224,935



### 2022 daytime population

1-mile	19,341
3-mile	96,482
5-mile	240,715



### 2022 total employees

1-mile	12,167
3-mile	52,723
5-mile	111,028



### 2022 total households

1-mile	3,842
3-mile	27,535
5-mile	84,111



### 2022 average HH income

1-mile	\$160,760
3-mile	\$144,472
5-mile	\$125,054

### traffic counts

Sierra College Blvd (south of Douglas Blvd)	29,378
Sierra College Blvd (north of Douglas Blvd)	26,790
Douglas Blvd (west of Sierra College Blvd)	44,328
Douglas Blvd (east of Sierra College Blvd)	42,175



**BARINGS**

Kevin Soares  
Executive Vice President  
CA DRE #01291491  
ksoares@GallelliRE.com

Jeff Hagan  
Senior Vice President  
CA DRE #01494218  
jhagan@GallelliRE.com

Gallelli Real Estate  
3005 Douglas Blvd., Suite 200  
Roseville, CA 95661  
P 916 772 1700  
www.GallelliRE.com  
Gary B. Gallelli, Broker  
CA DRE #00811881



# RENAISSANCE CREEK

## PROPERTY OVERVIEW

A PROUD MEMBER OF  
**CHAINLINKS**  
RETAIL ADVISORS

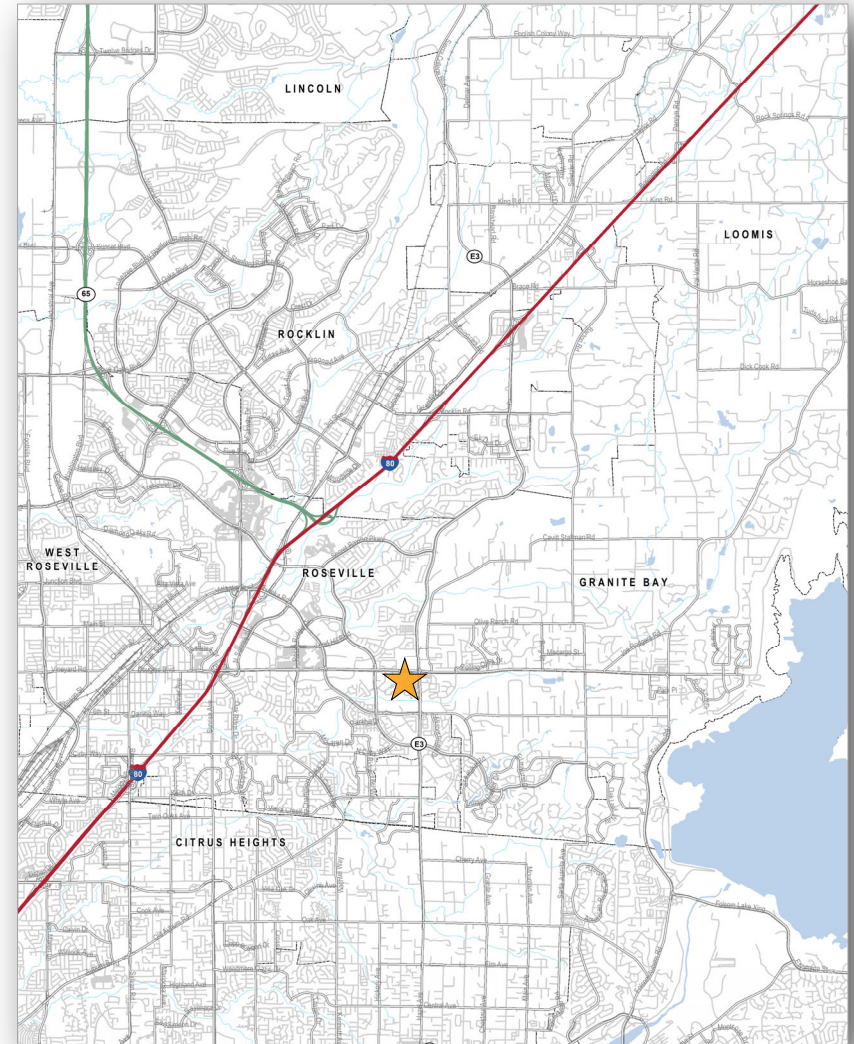
**Renaissance Creek** is located at the southwest corner of Douglas and Sierra College Boulevards in Roseville, California and is situated at the gateway to Granite Bay, one of the most affluent retail, office and residential areas in the entire Sacramento region.

The Douglas Boulevard corridor is the main east/west commercial arterial in Roseville and has become one of the largest office sub-markets with one of the strongest daytime populations in the Sacramento Region.

Sierra College Boulevard is the main north/south arterial in Roseville and connects Highway 50 to Interstate 80.

These two heavily traveled streets meet to create the most premier intersection in the Roseville/Granite Bay communities.

**Village at Renaissance Creek** provides a gathering place and an authentic and vital atmosphere that residential and office communities are drawn to and features a premier and unparalleled location, numerous outdoor seating venues, pedestrian-oriented plazas and beautiful outside architectural amenities.



**BARINGS**

Kevin Soares  
Executive Vice President  
CA DRE #01291491  
ksoares@GallelliRE.com

Jeff Hagan  
Senior Vice President  
CA DRE #01494218  
jhagan@GallelliRE.com

Gallelli Real Estate  
3005 Douglas Blvd., Suite 200  
Roseville, CA 95661  
P 916 772 1700  
www.GallelliRE.com  
Gary B. Gallelli, Broker  
CA DRE #00811881



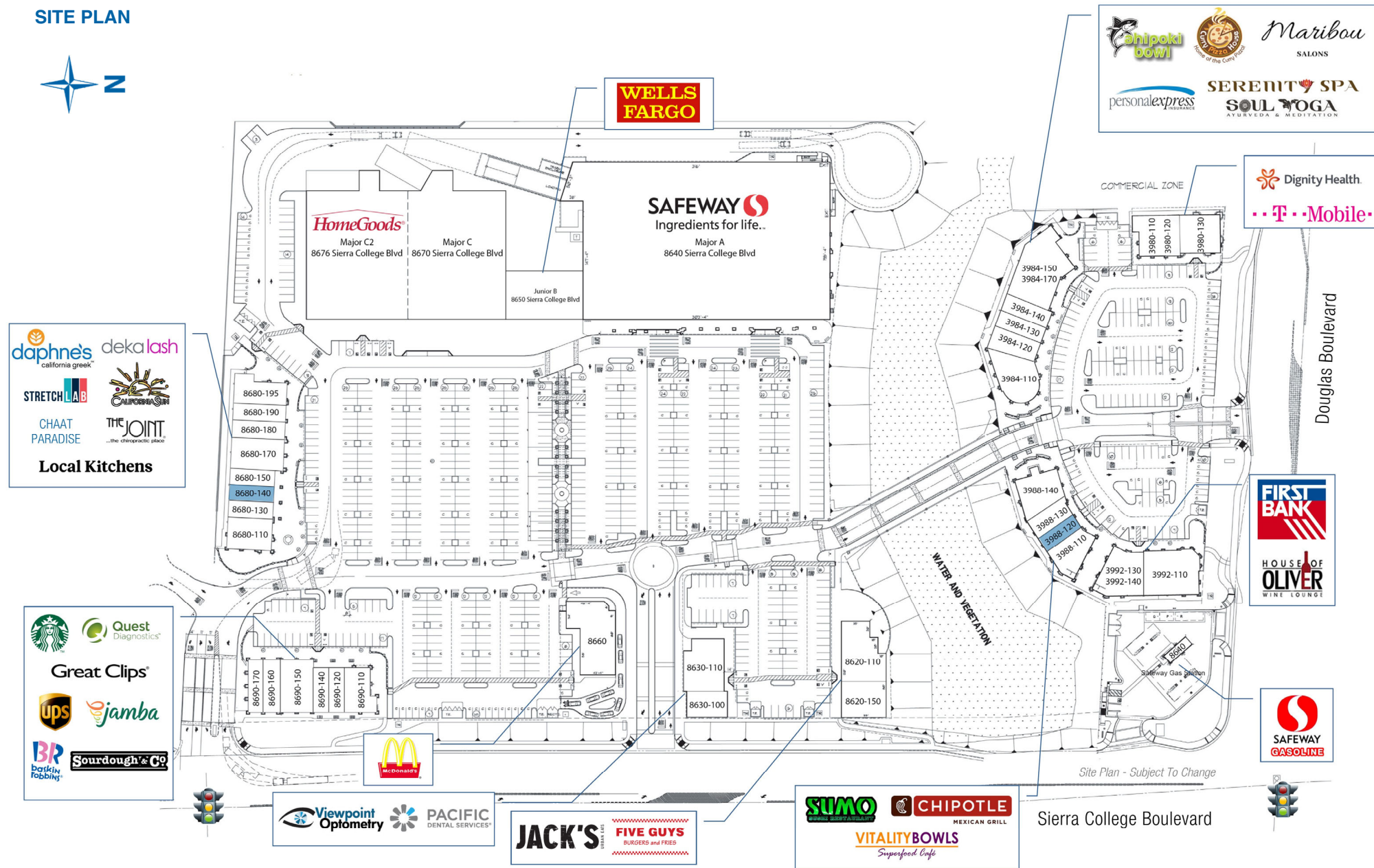
**GALLELLI**  
REAL ESTATE

# RENAISSANCE CREEK

SWC Sierra College Boulevard & Douglas Boulevard - Roseville, CA

A proud member of  
**CHAINLINKS**  
RETAIL ADVISORS

## SITE PLAN



SUITE	TENANT	SQ. FT.
3980-110-120	Dignity Health	2,501
3980-130	T-Mobile	2,428
3984-110	AhiPoki Bowl	2,870
3984-120	Maribou Salon	1,624
3984-130	Personal Express Insurance	1,200
3984-140	Curry Pizza House	1,200
3984-150-170	Serenity Spa / Soul Yoga	4,656
3988-110	Sumo Sushi	1,802
3988-120	<b>AVAILABLE</b>	997
3988-130	Vitality Bowls	1,200
3988-140	Chipotle	2,570
3992-110	First Bank	3,727
3992-130 & 140	House of Oliver Wine Lounge	2,734
8620-110	Jack's Urban Eats	3,600
8620-120	Five Guys Burgers & Fries	2,400
8630-100	Viewpoint Optometry	1,861
8630-110	Pacific Dental	2,800
8640	Safeway Fuel	
8660	McDonalds	4,450
8680-110	Daphne's California Greek	2,214
8680-130	Deka Lash	1,100
8680-140	<b>AVAILABLE</b>	1,100
8680-150	StretchLab	1,100
8680-170	California Sun	2,600
8680-180	Chaat Paradise	1,300
8680-190	The Joint Chiropractic	1,154
8680-195	Local Kitchens	2,236
8990-110	Starbucks	1,600
8690-120	Quest Diagnostics	1,155
8690-140	Great Clips	1,100
8690-150	Baskin Robbins/Sourdough & Co.	2,600
8690-160	The UPS Store	1,300
8690-170	Jamba Juice	1,300

SUITE	TENANT	SQ. FT.
Major A	Safeway	60,227
Junior B	Wells Fargo	5,030
Major C	<b>AVAILABLE FOR SUBLEASE</b>	20,000
Major C2	HomeGoods	27,500

For leasing information, please contact:

**Kevin Soares**  
CA DRE #01291491  
ksoares@GallelliRE.com

**Jeff Hagan**  
CA DRE #01494218  
jhagan@GallelliRE.com

**Gallelli Real Estate**  
3005 Douglas Blvd., Suite 200  
Roseville, CA 95661  
P 916 772 1700  
www.GallelliRE.com  
Gary B. Gallelli, Broker  
CA DRE #00811881

# RENAISSANCE CREEK

## INTERSECTION AERIAL

A PROUD MEMBER OF  
**CHAINLINKS**  
RETAIL ADVISORS



**BARINGS**

Kevin Soares  
Executive Vice President  
CA DRE #01291491  
ksoares@GallellIRE.com

Jeff Hagan  
Senior Vice President  
CA DRE #01494218  
jhagan@GallellIRE.com

Gallelli Real Estate  
3005 Douglas Blvd., Suite 200  
Roseville, CA 95661  
P 916 772 1700  
www.GallellIRE.com  
Gary B. Gallelli, Broker  
CA DRE #00811881



Licensed as Real Estate Salespersons by the CA DRE The information contained herein has been obtained from sources we deem reliable. While we have no reason to doubt its accuracy, we do not guarantee it.  
© Gallelli Real Estate. All Rights Reserved.



# RENAISSANCE CREEK

## SHOPPING CENTER PHOTOS

A PROUD MEMBER OF  
**CHAINLINKS**  
RETAIL ADVISORS



**BARINGS**

**Kevin Soares**  
Executive Vice President  
CA DRE #01291491  
ksoares@GallelliRE.com

**Jeff Hagan**  
Senior Vice President  
CA DRE #01494218  
jhagan@GallelliRE.com

**Gallelli Real Estate**  
3005 Douglas Blvd., Suite 200  
Roseville, CA 95661  
P 916 772 1700  
www.GallelliRE.com  
Gary B. Gallelli, Broker  
CA DRE #00811881



Licensed as Real Estate Salespersons by the CA DRE The information contained herein has been obtained from sources we deem reliable. While we have no reason to doubt its accuracy, we do not guarantee it.  
© Gallelli Real Estate. All Rights Reserved.



# RENAISSANCE CREEK

## IMMEDIATE VICINITY RETAIL AERIAL

A PROUD MEMBER OF  
**CHAINLINKS**  
RETAIL ADVISORS



**BARINGS**

Kevin Soares  
Executive Vice President  
CA DRE #01291491  
ksoares@GallelliRE.com

Jeff Hagan  
Senior Vice President  
CA DRE #01494218  
jhagan@GallelliRE.com

Gallelli Real Estate  
3005 Douglas Blvd., Suite 200  
Roseville, CA 95661  
P 916 772 1700  
www.GallelliRE.com  
Gary B. Gallelli, Broker  
CA DRE #00811881



Licensed as Real Estate Salespersons by the CA DRE The information contained herein has been obtained from sources we deem reliable. While we have no reason to doubt its accuracy, we do not guarantee it.  
© Gallelli Real Estate. All Rights Reserved.

